

Fact Sheet

Supersmart



Supersmart powered by Bizerba – the world's first cost-effective Scan & Go Loss Prevention System for the Point of Sale. Create an innovative shopping experience with Artificial Intelligence (AI), simplify your internal processes, increase your sales and reduce revenue loss.



More information
High performance with a wide range of solutions and options.

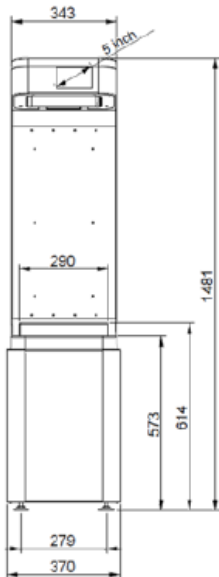
Specifications	Facts
Software	
Operating system for mobile app	Operating systems as from Android 4.0.3 or iOS 8
Suitable devices	Smartphones, tablets, handheld scanners
Cloud	<ul style="list-style-type: none"> – High availability – Disaster recovery – Automated scaling – Complete backup solution – Kubernetes Cluster Management – Secured Google Cloud platform, virtual private Cloud Azure/Amazon/Any-K8S providers are supported
Artificial intelligence (AI)	Multi-level system for validating shopping basket/cart content based on shopping patterns, item-to-item relationships, visual recognition and advanced proprietary machine learning algorithms.
Ports	SSL via standard port 443
Number of customers and items	The system is completely dynamic and is not limited in terms of number of customers and items.
Validation and approval	Regardless of the number of items in the shopping basket or shopping cart, the average validation and approval time is 5 seconds. Multiple shopping baskets or carts per customer are supported.
Throughput	Assuming a checkout time of 30 seconds per customer, the system can handle up to 120 checkout transactions per hour.
Safety	Secure, self-contained system with limited and secure access via public networks.
Data security	Data allowing conclusions to be drawn about a person as an individual is not saved. Only statistical data on the shopping basket, shopping behavior etc. is collected.

Hardware	
Power consumption	AC 120-240 V
Camera	HD webcam
Display	5" LCD
Approvals	CE, UL, CB
Communication/connection	LAN 10/100/1000 Mbit
Color	<ul style="list-style-type: none"> – Plastic parts: Anthracite gray, RAL 7016 matte – Metal parts: Gray aluminum, RAL 9007
Load receptors	<p>S1:</p> <ul style="list-style-type: none"> – Load receptor iL Precision 300F/SP – Stainless steel – Measures: 395 x 290 x 80 mm (L x W x H) – Mobile installation without fixation <p>S3 200:</p> <ul style="list-style-type: none"> – Load receptor iL Professional 800F/MP – Stainless steel – Measures: 1,200 x 800 x 81 mm (L x W x H) – Installation includes fixation and a cutout in the floor for the pit frame <p>S3 200 on:</p> <ul style="list-style-type: none"> – Load receptor iL Professional 750 – Stainless steel – Measures: 1,200 x 700 x 35 mm (L x W x H) – Installation includes fixation and a small cutout in the floor for a cable duct <p>S3 600:</p> <ul style="list-style-type: none"> – Load receptor iL Professional 800F/MP – Stainless steel – Measures: 1,940 x 1,150 x 81 mm (L x W x H) – Installation includes fixation and a cutout in the floor for the pit frame
Weighing ranges	<p>S1: 30 kg/0.001 kg</p> <p>S3 200: 200 kg/0.02 kg</p> <p>S3 200 on: 200 kg/0.02 kg</p> <p>S3 600: 600 kg/0.05 kg</p>
Net weight of the solution	<p>S1: 40-50 kg</p> <p>S3 200: Approx. 241 kg</p> <p>S3 200 on: Approx. 241 kg</p> <p>S3 600: Approx. 332 kg</p>

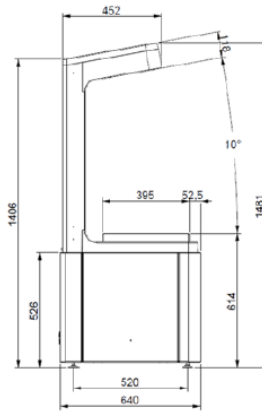
Info graphics



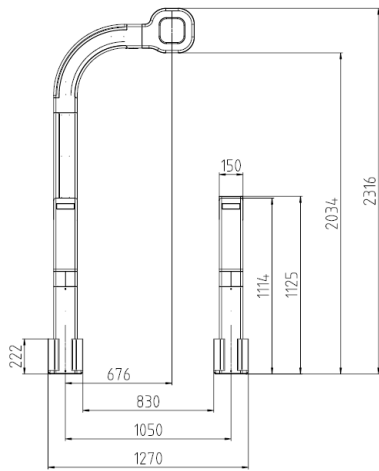
Dimensional drawings



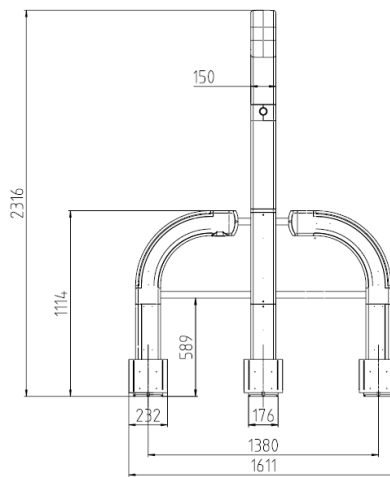
S1 - front view



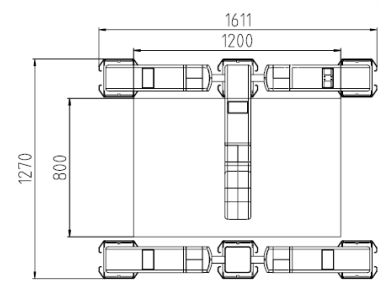
S1 - side view



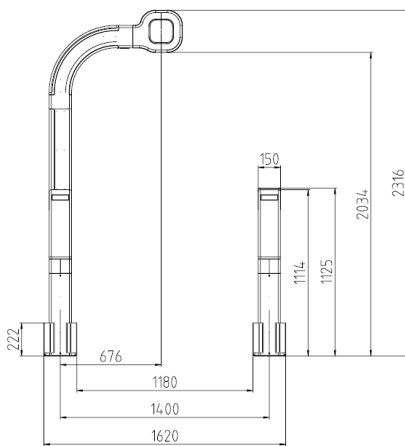
S3 200 (short scale) - front view



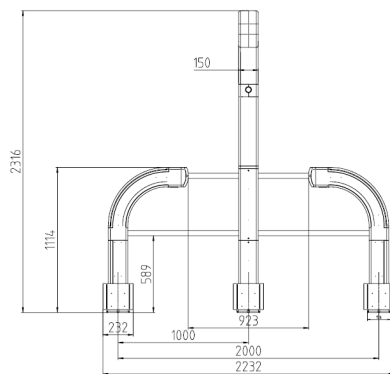
S3 200 (short scale) - side view



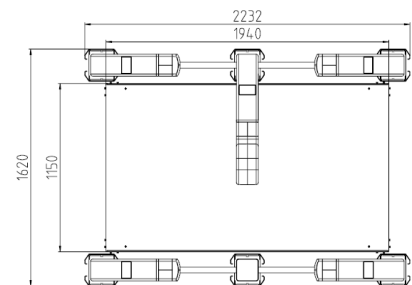
S3 200 (short scale) - top view



S3 600 (long scale) - front view



S3 600 (long scale) - side view



S3 600 (long scale) - top view

Bizerba SE & Co. KG
 Wilhelm-Kraut-Straße 65
 72336 Balingen

T +49 7433 12-0
 fax: +49 7433 12-2696
 marketing@bizerba.com

www.bizerba.com